

POUDRE RIVER TRAIL

FIND YOURSELF IN NATURE

2024 ANNUAL REPORT

Exciting things are happening along the Poudre River Trail, thanks to the work of the Poudre River Trail Corridor Board of Directors, the Executive Director, and many volunteers. Our population continues to increase, affirming the need to preserve and maintain this valuable connection to nature right in our backyard.

In 2024, we added the Lockhart Granary next to the iconic Red Barn at the Signature Bluff Natural Area in Greeley.

Our events continue to promote a healthy lifestyle, educate the public and create fundraising opportunities.

Our Endowment reached a new milestone in 2024 reaching \$50,000.



J. Douglas Lockhart left us on April 19, 2020, but his imprint on Greeley endures with this structure dedicated to his memory. He attended both Aims College and the University of Northern Colorado. His love of construction and his strong work ethic led him to start Lockhart Constructors in 1974, where he displayed his creative and innovative talents, becoming known as one of the best builders of custom homes in Northern Colorado.

Doug gave back to the community in many ways, including in his service of over 20 years on the Greeley Planning Commission. Doug was also the builder of the Todd Family picnic shelter at the Poudre Learning Center. Doug's love of life and friends, his mischievous humor, commitment to lead by example, passion for the outdoors and of the Poudre River Trail is memorialized in this Granary Picnic Shelter, where it will offer its visitors a place to pause and reflect on the river and natural area. This gift to Doug's memory is dedicated by his wife, Kim, and reflects the gratitude of his family and friends for his enduring love and commitment to community.

MILESTONES ALONG THE TRAIL

- Signature Bluff Natural Area Master Plan.
- Lockhart Memorial Granary / Picnic Shelter.
- Poudre River Trail East Expansion Master Plan from east Greeley to the confluence with the South Platte River.
- Trail under Highway 85 as part of Greeley's 12th Street Outfall Project.
- \$750,000 investment to improve the flood resilience, safety, and wildlife habitat on the Duran section of the trail in Greeley (between 71st and 59th Avenues).
- Planning Grant for new trailhead at 59th Avenue in Greeley.
- Wetland Experience at Eastman Park South in Windsor.



POUDRE RIVER TRAIL ENDOWMENT FUND

The Poudre River Trail Corridor is a 501(c)(3) nonprofit organization and relies on generous donors and fundraising to fund our projects and events.

An endowment is a tax-deductible donation to a nonprofit organization. The fund is a permanent, self-sustaining source of funding. Endowment assets are invested, and interest or dividends generated from the endowment can be paid out to support the fund's purpose, without drawing on the principal amount of the original donations. An endowment is the gift that keeps on giving! We started our endowment in 2022 with \$20,000 and it has grown to over \$50,000. We have ambitious goals for the future so we can preserve and improve the Poudre River Trail for future generations. We need your help!

When donating to the Poudre River Trail endowment fund, in your name or in honor or in memory of a loved one, you are providing future generations the opportunity to remember and celebrate your values and generous spirit. You can donate during your lifetime, over a period of years, or all at once. Many donors start with a modest gift and add to their gift through their wills, living trusts, or other gift designations.

To make a direct donation in honor or memoriam, please contact the Weld Community Foundation and note your interest in a contribution to the Poudre River Trail Corridor Fund. You can contact the Foundation at: www.weldcommunityfoundation.org.

For additional information, please contact our Executive Director at 970-381-6250 or at director@poudretrail.org. Thank you.



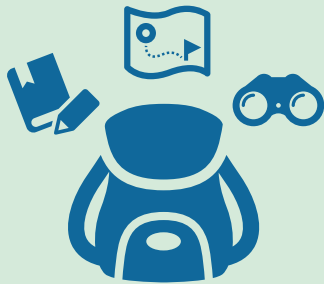
CYCLING WITHOUT AGE

673 Passengers Served
1,127 Miles Ridden on 3 Trishaws
700 Volunteer Hours



POUDRE TRAIL DAYS

112 Participants



TRAILATHON

120 Participants
20 Volunteers



FULL MOON BIKE RIDE

100 Participants



ENDOWMENT BALANCE

\$53,000
(up over 20% from 2023)



FUND\$ RAISED

\$117,296



NEW BOARD MEMBER SPOTLIGHT



Dr. Neil Allen, MD

Retired Obstetrician Gynecologist

We would like to welcome Neil Allen to the Poudre River Trail Corridor Board of Directors as a representative for Greeley.

Since an early age Neil Allen has been a dedicated bicyclist and naturalist, both in the US and internationally. For years he lived in Turkey, England, and multiple states in the US, but for the last five decades he has resided in Greeley. He finds Northern Colorado with its many bike paths and cultural opportunities a great place to live. He is grateful to the visionaries who have developed natural trails. After using the Poudre Trail and many other trails for many years, he was delighted to join the Poudre River Trail Board. He strongly supports trails and open spaces development. As John Muir said, "In every walk with nature one receives far more than he seeks."



Ron Redfern
Owner, The
Cow Saloon &
Eatery

We would like
to welcome
Ron Redfern to
the Poudre

River Trail Corridor Board of Directors as a representative for Greeley.

I am about helping people realize their dreams. I love all things fun especially if there is water and sunshine. You could call me a serial entrepreneur. I created a fun product called the Mürger that turns nearly every cup into a mug. I am passionate about Real Estate as an investor as well as a full time Realtor. My wife, Jodie, and I founded The Cow Saloon & Eatery in April of 2022, along with our daughter and son-in-law, when we purchased "The Mad Cow," a business that has been operating in the same location for 12 years. We have been in Greeley since the 1980s and raised our family in the community. We were excited to put our own twist on a well-loved establishment and give Greeley another reason to head Downtown for food and fun. I am excited to lead our new Poudre River Trail Fundraising Committee.

(970) 381-6250

P.O. Box 388, Windsor, CO 80550

www.poudretrail.org
